

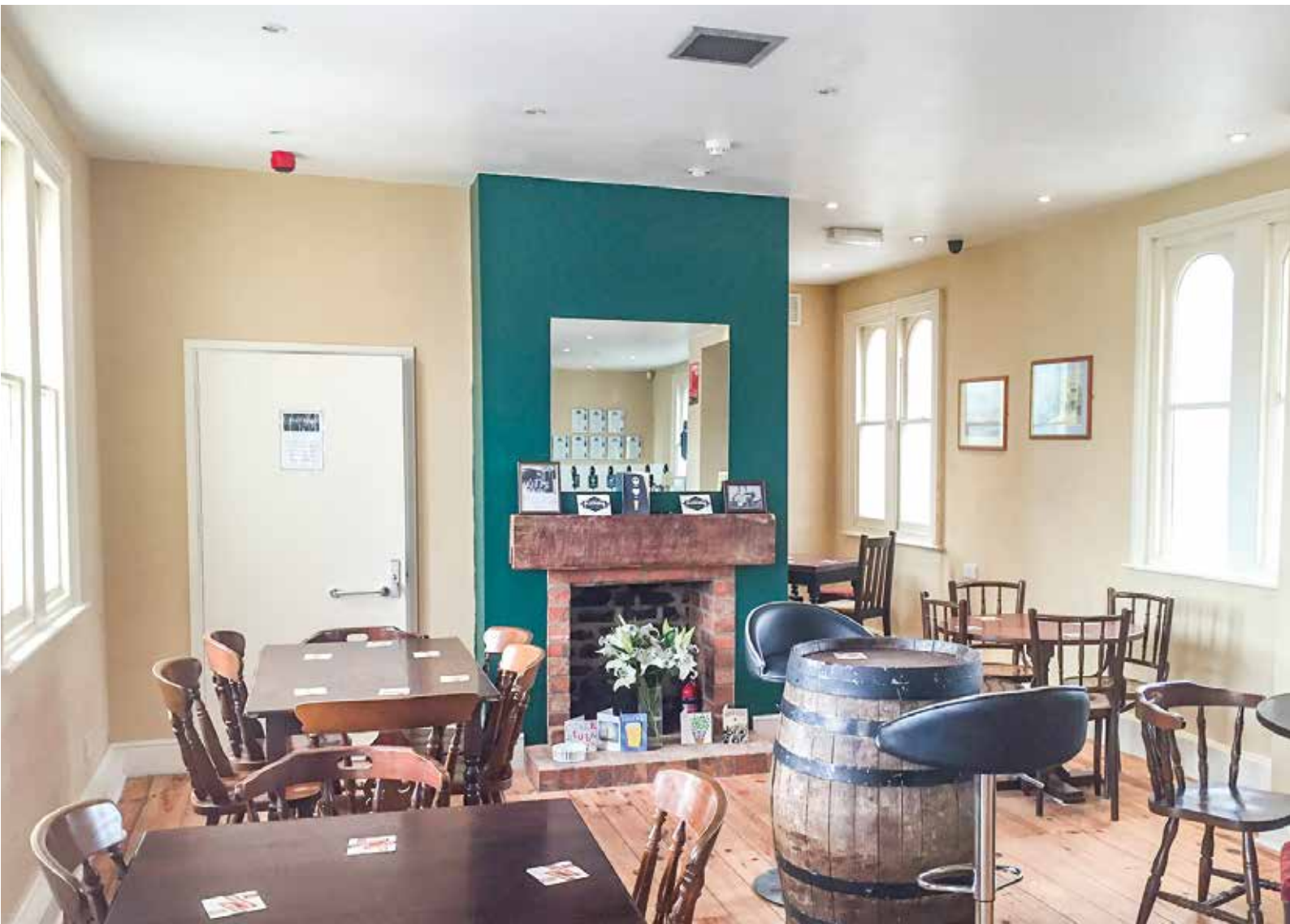
# KEIM OPTIL®

KEIM Optil is a premium quality sol-silicate paint specifically formulated for elegant interior applications, available in a wide range of colours including bold and expressive colour shades.

KEIM Optil, using sol-silicate technology, is developed for direct application onto both mineral substrates and over sound existing paint coatings. It is a modern mineral paint ideal for application onto historic and contemporary buildings.

KEIM Optil is highly vapour permeable with no added preservatives, solvents or plasticisers.

KEIM Optil is breathable, forming a microcrystalline structure with the substrate when applied, which allows the free passage of vapour from the substrate whilst preventing ingress of moisture. This microcrystalline structure gives a high level of light reflectance, resulting in energy savings through reduction in lighting levels. KEIM Optil is inherently non flammable and mould and fungal resistant.



# KEIM OPTIL®

## TECHNICAL INFORMATION

### 1 Field of application

For all unpainted or previously painted conventional interior wall and ceiling surfaces. Particularly suitable for the creation of interior designs with specific requirements for high colour intensity.

### 2 Product properties

- Water vapour permeable, non film forming, and micro-porous
- Multi purpose application
- Abrasion resistant
- Non flammable
- Intense and lightfast colour shades
- Outstanding opacity
- No solvents and plasticisers added
- Certified resistance to mould growth
- Low environmental impact

### Colour shades

White and in accordance with the KEIM Exclusiv and Avantgarde colour swatches.

**Keim Optil s<sub>d</sub>**: ≤ 0.01 m, class 1

**VOC Content:** 0-8g/l VOC (white), 0-30g/l VOC (colour)

### Application instructions

#### 3 Substrate preparation

Highly absorbent or friable substrates should be treated with KEIM Granital Dilution. A base coat of KEIM Optil Grob (textured finish) is optional for substrates which have repaired or filled areas.

### Application

KEIM Optil should be applied as a two coat undiluted system. KEIM Optil can be applied by brush, roller, or, air-less spray with a minimum period of 12 hours between coats

### Consumption

Approx. 0.22lt/m<sup>2</sup> for two coats onto a smooth surface.

Consumption rates are offered for guideline purposes only and are quoted for smooth surfaces. Actual rates are the responsibility of the applicator. Project specifications should be referred to for specific rates.

### Cleaning of tools

Clean immediately after use with water

### 4 Packaging

5lt & 15lt containers

